

Heliconia



Sketch by Allen Shaw

Heliconia

3 BHK Signature Apartments

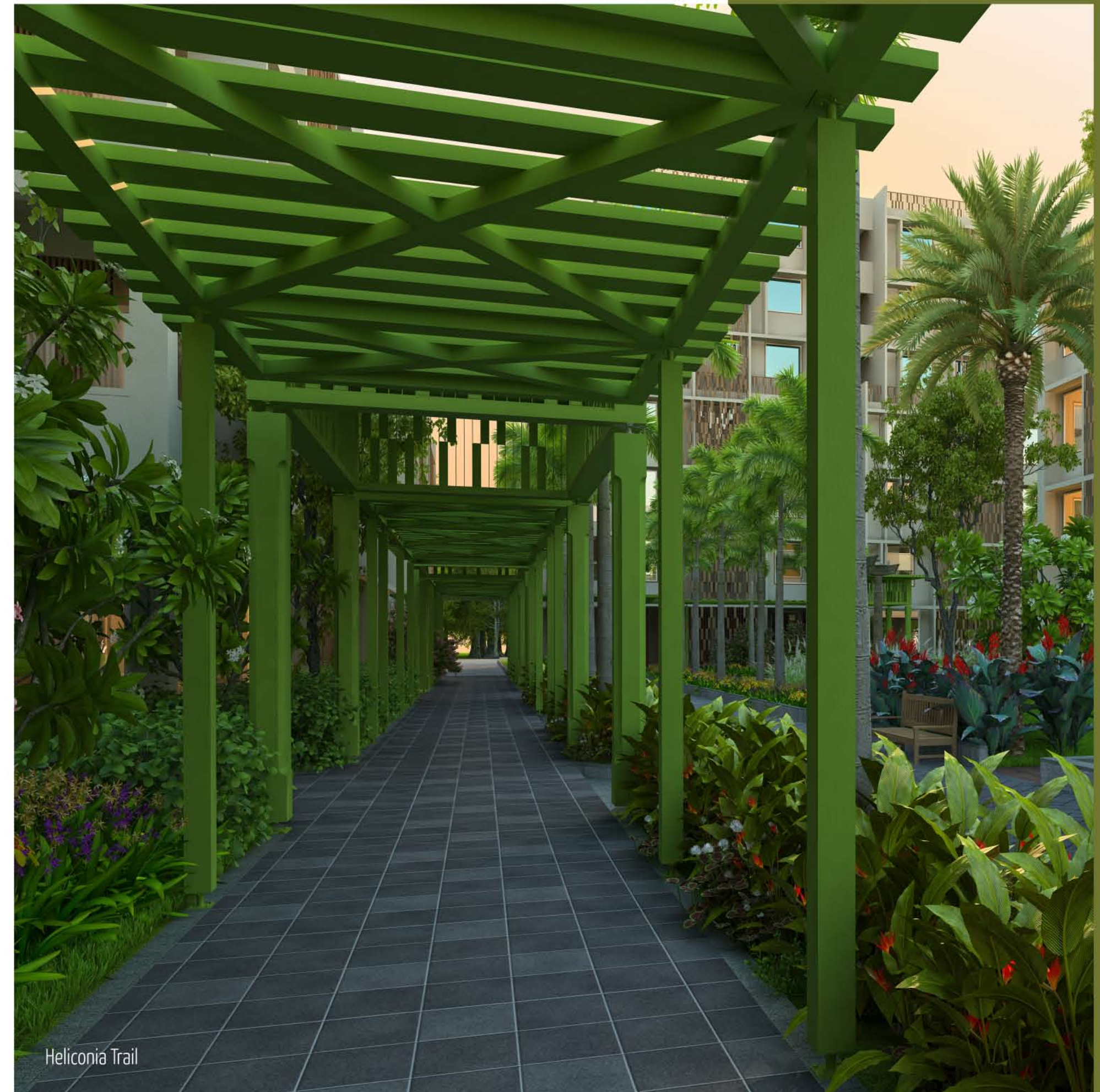


Heliconia - The Flowering Valley

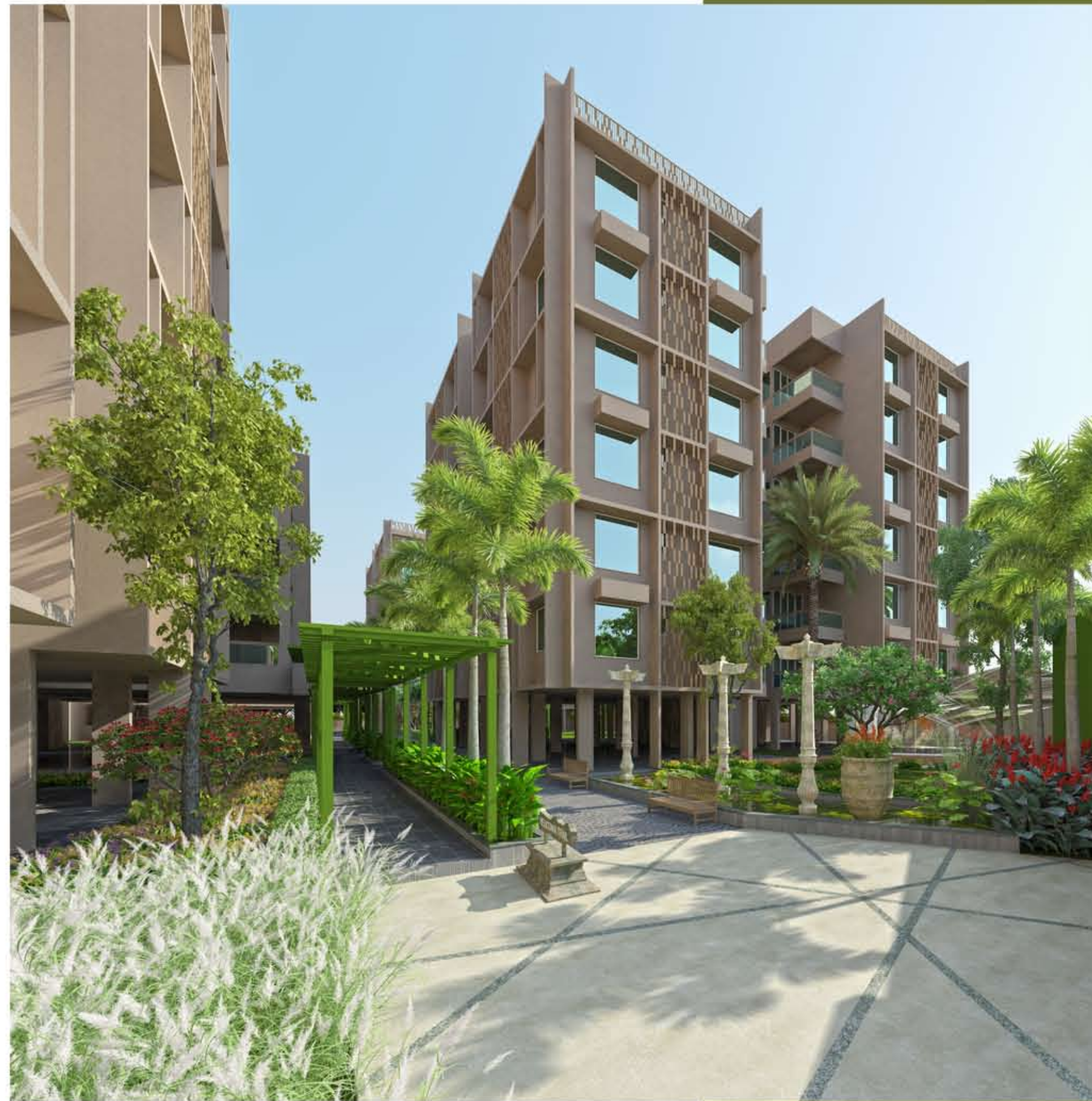
"Heliconias" consist of a genus of 100 to 200 flowering species of the tropical western world, which resemble the "birds of paradise". They are mostly landscape plants which are resplendent in beauty.

Heliconia is such an initiative which is majestic and beautiful in its own right, featuring magnificent 3 BHK Signature Apartments of transcendental beauty. Each of the elements within the residential project evokes a sense of creativity and passion which rests lightly on the entire structure.

Go ahead... take the ride to the flowering valley which basks in beauty, unlike anything else.



Heliconia Trail

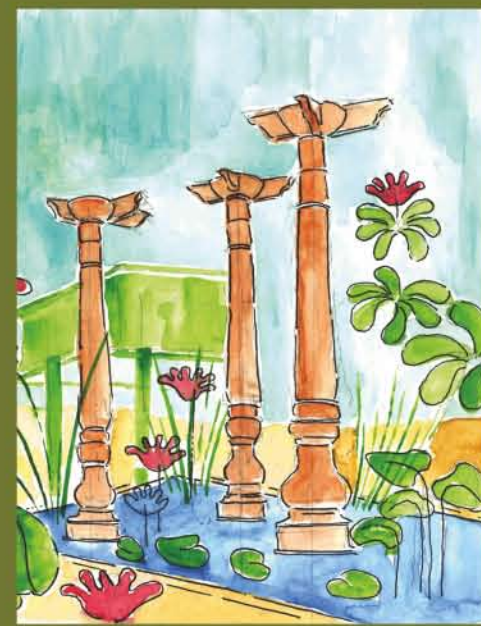


Legend

- 01 Heliconia Trail
- 02 Multipurpose Court
- 03 Seating Area
- 04 Indoor Games
- 05 Children Play Area
- 06 Indoor Garden
- 07 Security Cabin
- 08 Plaza
- 09 Gazebo
- 10 Lawn
- 11 Gymnasium
- 12 Lily Pool
- 13 Squash Court
- 14 Visitor's Parking
- 15 Bus pick-up zone
- 16 Electrical Room
- 17 T. V. Lounge
- 18 Verandah



The towering palms and the serene water bodies reverberates with the full bloom of Heliconias delivering the mystical feel of the space beyond



The majestic view presents a magical aura of the green ambience surrounding the blooming paradise

Typical Floor Plan

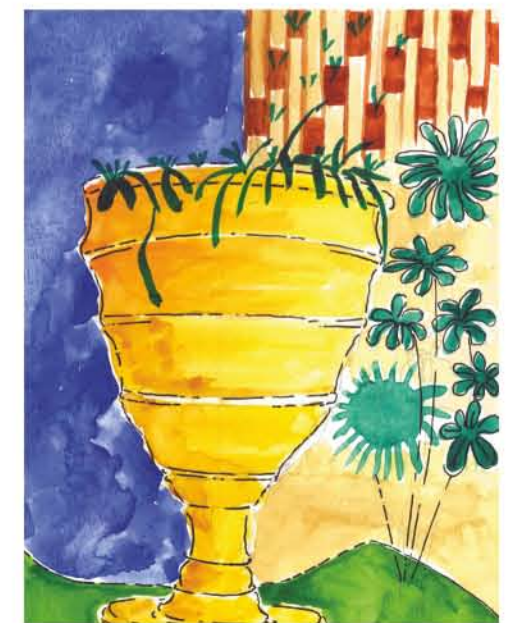


Living in sanctity demands the convergence of peaceful mirth and transient space





Nothing equates the grandness of green flora with the structural magnificence of well-designed dwellings



3 BHK Unit Plan
Block A, D & E



3 BHK Unit Plan
Block B & C



Sample House - Actual Images



Building an abode requires the lightness of touch and a creative vision from the artists themselves



Heliconia

3 BHK Signature Apartments

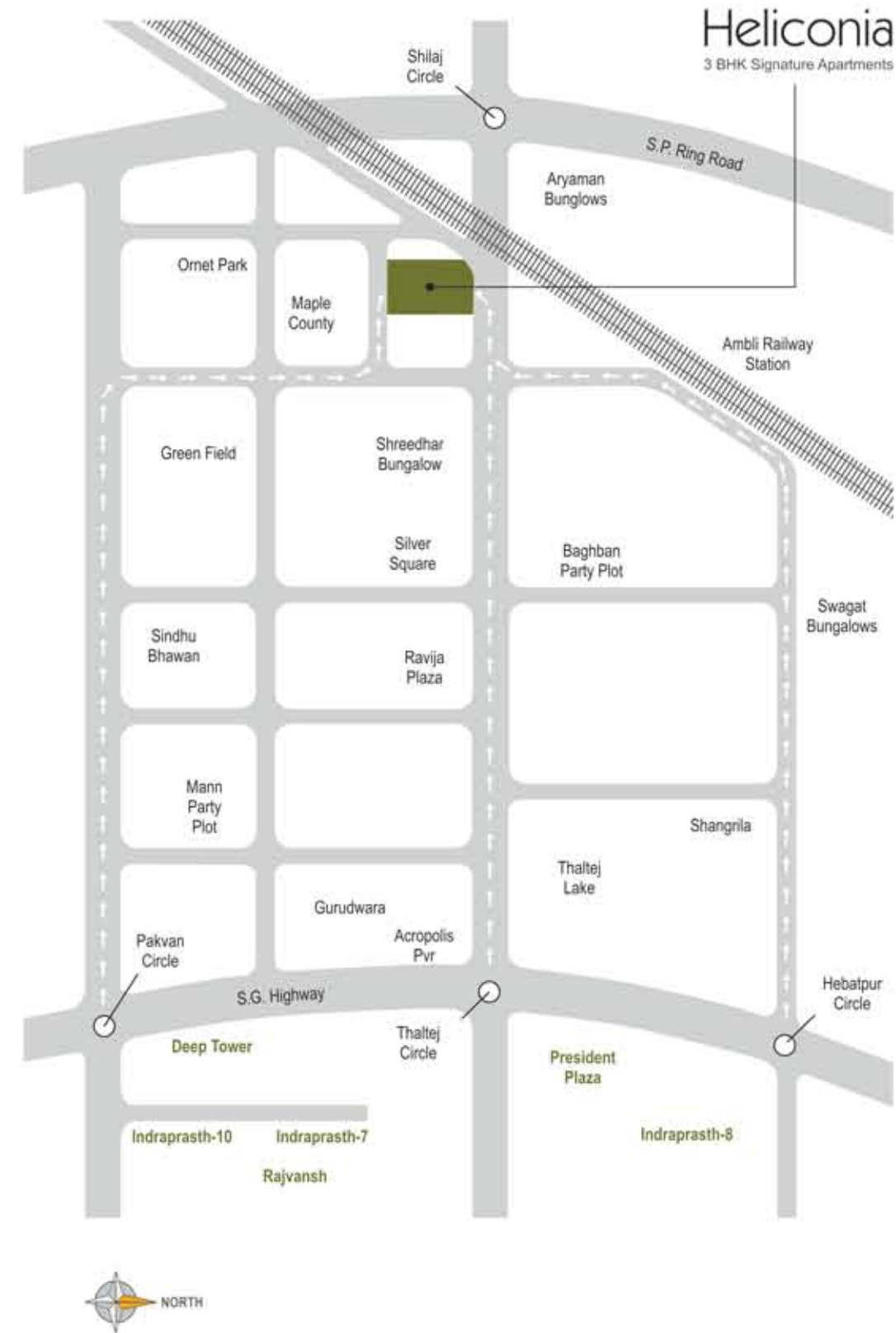
Specifications

- **Flooring:** Italian marble flooring in drawing, living and dining room. Wooden flooring in all bed rooms
- **Electrification:** Concealed three-phase electrification with adequate points as per architect design
- **Air-Conditioning:** Split A.C. units in the entire apartment
- **Windows:** UPVC double glazed vacuum glass windows with safety grill
- **Sanitaryware:** Premium quality bath fittings and sanitaryware
- **Water Supply:** With newly designed pressure, systems to ensure 24-hour water supply with power back-up generator
- **Parking:** Allotted basement parking space per apartment
- **Security System:** Scheme and flats are equipped with security system as per details finalized

Notes:

- In the interest of the continual developments in design and quality of construction, the developer reserves all right to make any changes in the scheme, including technical specifications, designs, planning layout at any stage and all the purchasers shall abide by such changes
- This brochure is intended only to convey the essential design and technical features of the scheme and shall not be construed to form part of the legal document. Agreement for allotment shall be final and binding to all purchaser

Location (Not to scale)



Well Wisher



SINCE 1980

Heliconia

3 BHK Signature Apartments

Developers:

Indraprasth Infrastructure

Near Aryan Corporate Park,
Thaltej -Shilaj Road, Shilaj.

M : +91 98250 07947, 98250 72340

E : indraprasth.infrastructure@gmail.com

W : www.indraprasth.in

Architect & Landscape Design:



Structural Engineer:

Setu Infrastructure